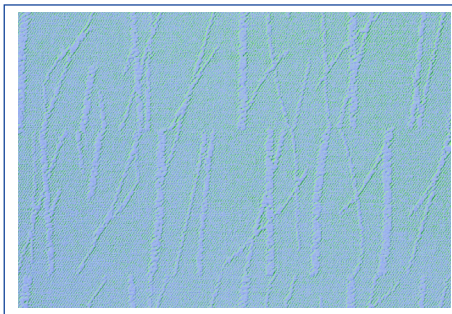


The design and functionality of Bellevue Medical Center were so well-received that it earned several awards, including *Contract's* 2010 Healthcare Environment Award (Acute Care), *Modern Healthcare's* 2010 Design Award (Honorable Mention/Built Award), and the American Institute of Architects/Nebraska Chapter 2008 Merit Award (Unbuilt Category) and 2010 Merit Award (New construction).

Bellevue also received rave reviews for its environmental responsibility, targeting USGBC LEED® (Leadership in Energy and Environmental Design) Silver Certification. "Our environmental focus definitely came into play when selecting the wallcovering," says Holm. "Vitrulan was a more environmentally friendly option compared to other wallcovering products." Manufactured from abundant natural raw materials (quartz), Vitrulan products contain no plasticizers or any harmful chemical agents. The wall system is chlorine-free and emits low volatile organic compounds (VOCs), allowing for healthier indoor air quality.

While many of the attributes of this wallcovering may go unnoticed by the patients at Bellevue Medical Center, they contribute to the overall healthy, nurturing environment of the facility. And those who work there will appreciate the durability and easy maintenance Vitrulan offers, for many years to come.



PHANTASY PLUS 950

About Vitrulan

Founded in 1921, Vitrulan manufactures glass deco fabric for wallcoverings, reinforcing fabric and other technical products made of textile glass. With two plants located in Germany, the company has more than 360 employees. Vitrulan wallcovering products create a smooth, durable and easy-to-clean surface that eliminates pores and pockets in which micro-organisms could accumulate. The company is dedicated to delivering high-quality products and outstanding service, on a global level. For more information, visit Vitrulan online at vitrulanusa.com or call 888-267-4067.



Ger-Eck, LLC

Exclusive Distributors of
Vitrulan Textilglas GmbH
1012 Sandstone Drive
South Windsor, CT 06074
Tel: 888.267.4067
E-mail: g.griffin@vitrulanusa.com
www.vitrulanusa.com

LEED® is a registered trademark of
the US Green Building Council

WALLCOVERING FROM NATURE CASE STUDY



Project Name:
Bellevue Medical Center
Project Location:
Bellevue, Nebraska
Design Firm:
HDR Architects
Product Specified:
VRP Wall System, Phantasy Plus
Pattern #950
Total Amount:
75,000 square feet

Vitrulan Provides Perfect Prescription for Walls At Bellevue Medical Center

Who knew walls could be so soothing – for both patients and staff? Opened in May 2010, Nebraska's Bellevue Medical Center has always been focused on creating a healing, nurturing environment for the community – even from the earliest planning stages of the 96-bed hospital. This vision extended to every element in the design of the facility, including what went on the walls.

At first glance, it would seem the Vitrulan Reinforced Polyurethane (VRP) Wall System installed at Bellevue Medical Center was chosen purely for its textural beauty. But it's the product's extreme durability, good hygiene and easy maintenance that make it perfect for healthcare settings like Bellevue.





Photo courtesy of HDR Architecture, Inc.; © 2010 Farshid Assassi

Made of 100 percent finely spun glass yarn, Vitrulan wallcovering is pound for pound stronger than steel in tensile strength. The result is a wallcovering that can withstand extensive wear and tear, allowing for reduced life-cycle cost. The product, which is installed similarly to wallpaper, can be painted as often as needed for added customization. And a water-based polyurethane coating can be applied for added reinforcement. The completed wall system can be repainted over and over, while still retaining its three-dimensional appearance.

The ability to paint it any color and the textural options of Vitrulan also made it a design-enhancing choice for Bellevue. "The subtle branch pattern in the wallcovering adds another dimension to the design," explains Holm. "And we liked that we can make it any color. In patient rooms, the walls at the head of the beds were painted a chocolate brown. A soothing blue color was used in surgery rooms."

"In the design of this space, we were looking for an affordable and attractive alternative to Acrovyn®," explains Bob Holm, senior associate with HDR Architects, which designed Bellevue Medical Center. "Besides being aesthetically appealing, one of the key benefits of Vitrulan is that it provides a seamless wallcovering, which helps with infection control in hospitals."

The VRP Wall System creates a smooth, seamless surface, with a high permeability rating, making it the perfect choice for hygiene-sensitive areas. Made of an inorganic material, Vitrulan wallcovering, combined with latex paint, is highly water vapor permeable, which directly addresses any mold and mildew concerns and improves indoor air quality. With this wall system, there are no pores and pockets in which micro-organisms could accumulate. Plus it can be easily cleaned and even scrubbed or powerwashed, without causing any surface damage.

The durability of the wallcovering system was also a major factor for Bellevue Medical Center. "The VRP Wall System is extremely impact resistant, even with beds and carts constantly hitting the walls," says Holm.

"As a matter of fact, we did some crash tests with this wallcovering," adds Bellevue Facility Manager Steve Post. "We ran carts into it, punched fists into the walls, and it stood up as well as or better than products we've used in the past. Durability is our biggest issue, with beds always moving around and bumping into walls. Of course, the ability to wash and patch the walls is also important."



"Made of 100 percent finely spun glass yarn, Vitrulan wallcovering is pound for pound stronger than steel in tensile strength."